

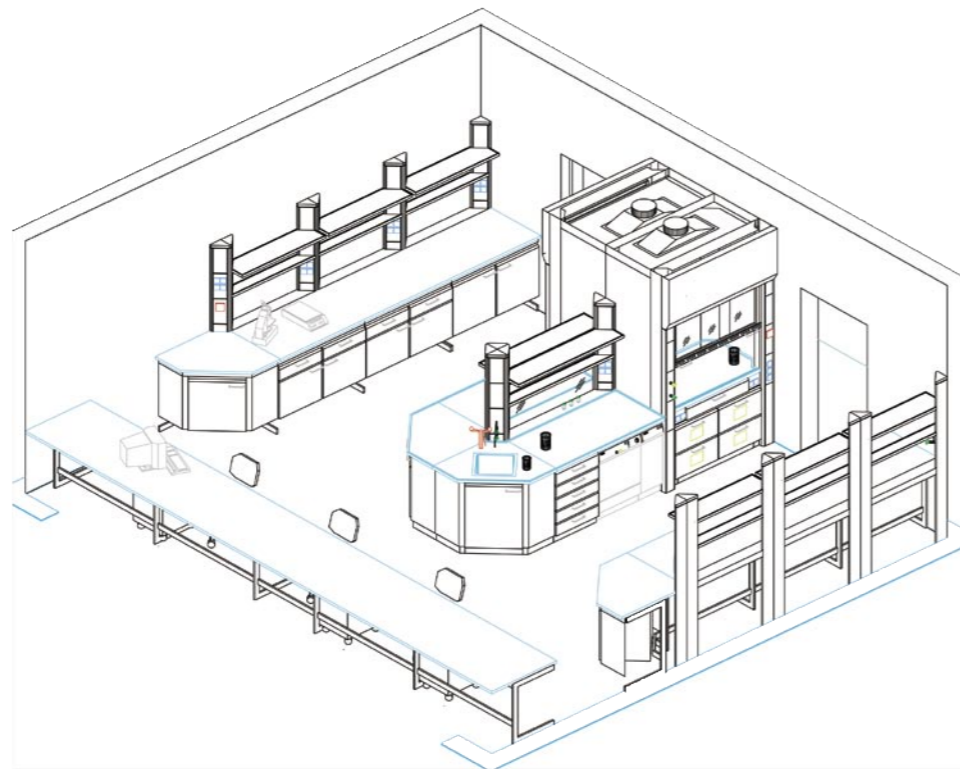
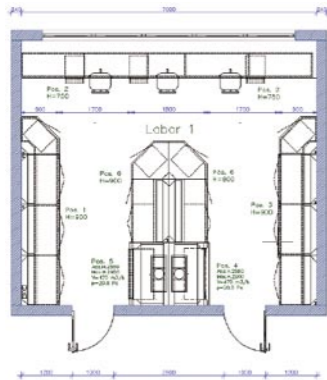
Correctly planned from the beginning...

...pays off twice in the end.

Designing the best laboratory layout where work patterns are supported by precise planning is a demanding goal. Köttermann always strive to achieve this aim due to the valuable knowledge and experience that our skilled professional designers are willing to share with you. With this knowledge we successfully install hundreds of laboratories every year.

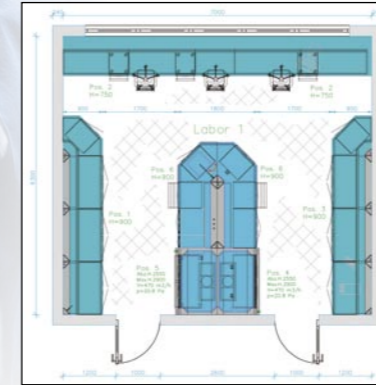
Very close cooperation with the potential customer forms an important basis for this. Working procedures are analysed with regard to effectiveness and efficiency, individual requirements are established with the relevant users and technical requirements are evaluated.

After our designers have made a detailed assessment of all the requirements, the planning process begins: taking into account all the safety-relevant guidelines and regulations, the best and most cost efficient option in each case is promoted for our customers consideration.



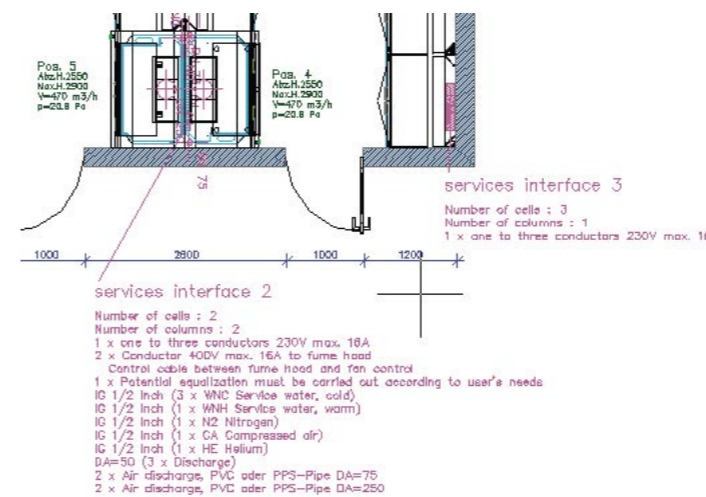
All matter of perspective

For a pictorial view the plans are drawn in 3 dimensional isometric views, giving clear and concise information of the laboratory concept. Resulting in the customer easily seeing what has been offered and how other equipment will interface with the furniture and fume cupboard solution.



Eye-catching effects

Various areas of the drawing are coloured so that the tabletop material can be recognised at a glance.



It would be very difficult to manually draw a complex layout with all the varying components. To achieve the best results we developed a sophisticated planning system with a special software package especially for planning laboratories.

AutoCAD used extensively throughout the world, serves as the basic programme allowing us to import third party drawings so that we can concentrate on the laboratory design. We can easily export our drawings to architects/planners electronically so that they can be opened and read, which speeds up the communication process.

The Laboratory design can be produced very quickly, safely, efficiently and correctly to precise details, errors can be avoided which ensures trouble free assembly of the completed laboratory to the customers complete satisfaction. Modifications to the design are easily handled during the planning process.

Another benefit from the software package is our ability to prepare a detailed schedule of quantities, reflecting every component that is required for the completion of the laboratory. The schedule is computer generated from the drawing, simplifying the tender preparation and order processing. In view of the fact that every single piece of furniture is labelled with its unique position and room location, so that the laboratory can be easily assembled.

Prudent forethought

We can prepare with very little effort complete mechanical and electrical layout drawings from our original laboratory plans. This is a benefit to everyone: the electrician knows exactly where the electrical sockets are required. The mechanical

engineer can see where the points for gases, water and drainage are required. The fume extraction/ventilation engineer can see which extract volumes are required from the fume cupboards, safety cabinets, ventilation hoods and canopies etc.

Perfectly planned – for your success!

Perspectives for clear sighted requirements

All a matter of view

To give you an even better impression, we can provide the two or three-dimensional drawing with realistic rendering.



Please fasten your seatbelts!

A new software makes it possible: a camera flight through the planned laboratory equipment. A realistic view that really can't be beat! On request we can also produce for the customer a film of the flight that can be played back by any DVD player and any computer with a CD drive and current operating system.

Systematic planning – from layout to 3D model



Any questions?

Germany:

Köttermann GmbH & Co KG
Industriestraße 2-10
D-31311 Uetze/Hänigsen
Tel. +49(0)51 47/976-0
Fax +49(0)51 47/976-844
E-Mail: info@koettermann.de

France:

Köttermann SARL
Parc GVIO – BP 7411
36, Rue de La Haye
F-38074 St. Quentin Fallavier
Tel. +33(0)4 74/95 23 80
Fax +33(0)4 74/95 23 89
E-Mail: mail@kottermann.fr

Spain:

Köttermann Systemlabor S.A.
c/Agustín e Foxá, 25-10° A
E-28036 Madrid
Tel. +34/91/7 32 01 10
Fax +34/91/7 32 01 11
E-Mail: mail@koettermann.es

United Kingdom:

Köttermann Ltd.
8 The Courtyard
Furlong Road
Bourne End
Buckinghamshire SL8 5AU
United Kingdom
Tel. +44(0)16 28/53 22 11
Fax +44(0)16 28/53 22 33
E-Mail: sales@kottermann.co.uk

Belgium/Luxembourg:

Köttermann bvba
Keesinglaan 26
B-2100 Antwerp
Tel. +32(0)3/3 60 97 90
Fax +32(0)3/3 25 83 47
E-Mail: info@kottermann.be

Netherlands:

Köttermann bv
Keizersgracht 62
NL-1015 CS Amsterdam
Tel. +31(0)20/5 20 75 57
Tel. +31(0)20/5 20 75 10
E-Mail: info@kottermann.nl

Poland:

Koettermann Sp. z o.o.
ul. Przasnyska 6
PL-01-756 Warszawa
Tel. +48(0)22/8 32 47 60
Fax +48(0)22/8 32 47 61
E-Mail: biuro@koettermann.pl

Internet under:

www.koettermann.com

Perfectly planned – for your success!